



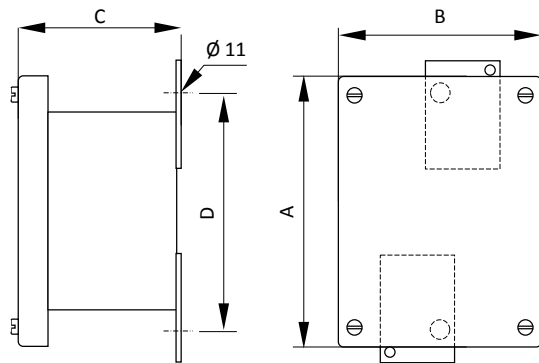
The junction boxes TNAE, made in stainless steel AISI 316L, are dedicated to hazardous areas and ideally suited to environments in the presence of chemical agents, seawater resistant for very high and very low operating temperatures.

The maximum number of terminals depends on the terminal section, the ambient temperature and the required temperature class.

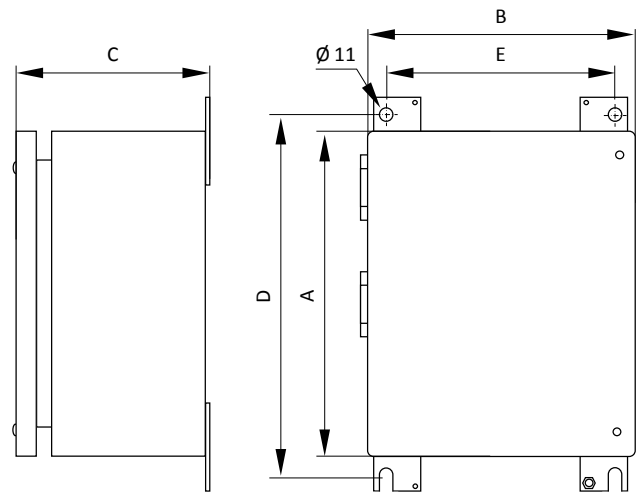
### TECHNICAL DATA

<b>Material</b>	Stainless steel AISI 316L
<b>IP rating</b>	IP66/IP67 (IP68 on request) according to EN/IEC 60529
<b>Temperature range</b>	-40°C ... +60°C (T4) -40°C ... +40°C (T5) Option: -50°C ... +60°C
<b>Certificate</b>	DNV 10ATEX90171
<b>Marking</b>	II 2 GD Ex e II T5 ... T4 Gb Ex tD A21 T85°C ... T100°C
<b>Surface treatment</b>	Acid as standard
<b>Accessories upon on request</b>	Breather valves Mounting plate Earth continuity plate, internal, Earth stud Gland plates Cable glands Electropolished treatment

## TNAE 121009 and 151510



## TNAE from 202010



### Dimensions

Product code	External			Fixing holes		Max. dissipated power at Tamb = 40°C (W)	Volume (dm <sup>3</sup> )	Weight (kg)
	A	B	C	D	E			
TNAE121009	160	120	90	150	-	6 W	1.08	1.5
TNAE151510	187	176	100	180	-	15 W	2.25	2.5
TNAE202010	200	200	100	230	160	20 W	4.00	3.0
TNAE202015	200	200	170	230	160	20 W	6.00	3.5
TNAE282815	280	280	170	310	240	30 W	11.76	5.2
TNAE302015	200	300	170	230	260	30 W	9.00	5.0
TNAE383815	380	380	170	410	340	40 W	21.66	8.1
TNAE384515	450	380	170	480	340	50 W	25.65	8.9
TNAE385715	570	380	170	600	340	65 W	32.49	10.7
TNAE575715	570	570	170	600	530	90 W	48.74	16.4
TNAE575730	570	570	320	600	530	90 W	97.47	21.4
TNAE577620	760	570	220	790	530	120 W	86.64	21.7
TNAE769520	950	760	220	980	720	200 W	144.40	32.9

Other sizes available on request

### Number maximum of entries per side

Product code	M20 - 1/2"		M25 - 3/4"		M32 - 1"		M40 - 1" 1/4		M50 - 1" 1/2		M63 - 2"	
	A (1)	B (1)	A (1)	B (1)	A (1)	B (1)	A (1)	B (1)	A (1)	B (1)	A (1)	B (1)
TNAE121009	6	4	4	2	3	2	2	1	2	1	1	1
TNAE151510	6	6	4	4	3	3	2	2	2	2	1	1
TNAE202010	10	10	7	7	4	4	2	2	2	2	2	2
TNAE202015	12	12	8	8	6	6	5	5	4	4	3	3
TNAE282815	18	18	12	12	9	9	8	8	7	7	4	4
TNAE302015	21	12	14	8	10	6	9	5	8	4	5	3
TNAE383815	24	24	16	16	12	12	10	10	9	9	6	6
TNAE384515	30	24	20	16	15	12	13	10	12	9	7	6
TNAE385715	39	24	26	16	19	12	17	10	15	9	9	6
TNAE575715	39	39	26	26	19	19	17	17	15	15	9	9
TNAE575730	88	88	58	58	44	44	39	39	35	35	22	22
TNAE577620	68	52	45	34	34	26	30	23	27	20	17	13
TNAE769520	88	68	58	45	44	34	39	30	35	27	22	17

(1) A: on the long sides - B: on the short sides